

U-BOLT

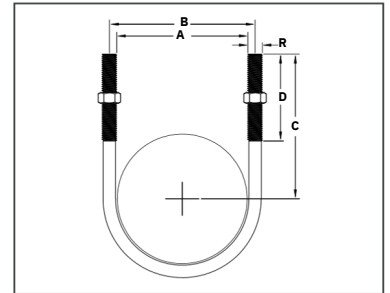
Designed to secure piping to structural members.
Used for support, guide or anchor for various pipe

MATERIALS: Stainless Steel 316

TEMPERATURE: MAX 450°F

NOTES: All dimensions listed are typical

ORDERING: Specify pipe size
Supplied with 4 hex nuts



PRODUCT CODE SS316	PIPE SIZE	R ROD SIZE	A	B	D	C	MAX. NORMAL LOAD (lbs)	MAX. SIDE LOAD (lbs)
12UB6	1/2"	1/4"	15/16"	1-5/16"	2"	2-3/8"	580	350
34UB6	3/4"	1/4"	1-1/8"	1-1/2"	2"	2-1/2"	580	350
1UB6	1"	1/4"	1-3/8"	1-3/4"	2"	2-3/4"	580	350
114UB6	1 1/4"	3/8"	1-11/16"	2-1/8"	2-1/2"	2-7/8"	1460	880
112UB6	1 1/2"	3/8"	2"	2-3/8"	2-1/2"	3"	1460	880
2UB6	2"	3/8"	2-7/16"	2-13/16"	2-1/2"	3-5/16"	1460	880
212UB6	2 1/2"	1/2"	2-15/16"	3-7/16"	3"	3-13/16"	2700	1620
3UB6	3"	1/2"	3-9/16"	4-1/16"	3"	4"	2700	1620
4UB6	4"	1/2"	4-9/16"	5-1/16"	3"	4-1/2"	2700	1620
5UB6	5"	1/2"	5-11/16"	6-3/16"	3"	5"	2700	1620
6UB6	6"	5/8"	6-11/16"	7-5/16"	3-1/2"	6-1/16"	1320	2595
8UB6	8"	5/8"	8-3/4"	9-3/8"	3-1/2"	6-15/16"	4320	2595
10UB6	10"	3/4"	10-7/8"	11-5/8"	4"	8-3/8"	6460	3880
12"UB6	12"	7/8"	12-7/8"	13-3/4"	4-1/2"	9-5/8"	9960	5975
14"UB6	14"	7/8"	14-1/8"	15"	5"	10-1/4"	9960	5975
16"UB6	16"	7/8"	16-1/8"	17"	5"	11-1/4"	9960	5975
24"UB6	24"	1"	24-1/8"	25-1/8"	6"	16-1/8"	11800	7080

Installation Note: The dimensions shown are approximate