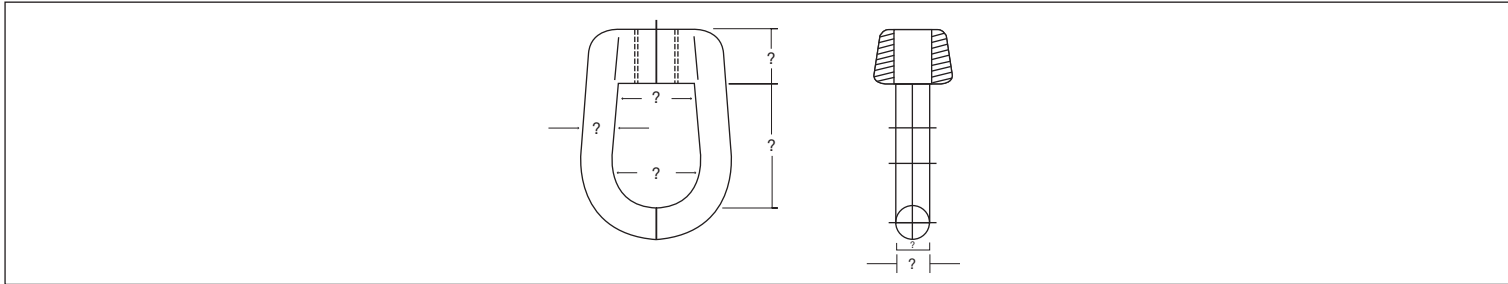


FORGED STEEL WELDLESS EYE NUT



SIZE		A		B		C		D		E	
in	mm	in	mm	in	mm	in	mm	in	mm	in	mm
3/8	10	1	25	1-3/8	35	1/2	13	2	50	7/8	22
1/2	13	1-1/8	29	1-3/8	35	1/2	13	2	50	7/8	22
5/8	16	1-1/8	29	1-3/8	35	1/2	13	2	50	7/8	22
3/4	19	1-1/8	29	1-3/8	35	1/2	13	2	50	7/8	22
7/8	22	1-1/2	38	1-7/8	48	3/4	19	2-5/8	67	1-1/8	29
1	25	1-1/2	38	1-7/8	48	3/4	19	2-5/8	67	1-1/8	29
1-1/8	29	1-5/8	41	2-1/4	57	1	25	3-1/4	83	1-3/8	35
1-1/4	32	1-5/8	41	2-1/4	57	1	25	3-1/4	83	1-3/8	35
1-1/2	38	1-5/8	41	2-3/8	60	1	25	3-1/2	89	1-3/8	35
2	50	4	102	4	102	1-1/2	38	6-1/4	159	2-1/4	57