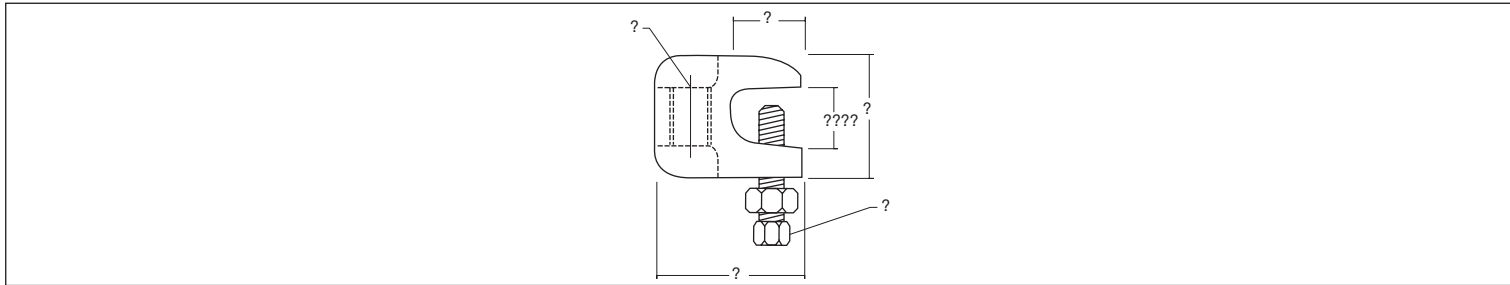


MALEABLE STEEL UNIVERSAL TOP BEAM CLAMP



A (Rod Size)		B		C		D		E		Max Rec Load		Weight per 100	
in	mm	in	mm	in	mm	in	mm	in	mm	lbs	kg	lbs	kg
3/8	10	.906	23	1.732	44	1.520	39	3/8	10	500	227	34.10	15.5
1/2	13	.906	23	1.890	48	1.575	40	3/8	10	950	432	53.36	24.2
5/8	16	.906	23	2.087	53	1.654	42	1/2	13	950	432	71.50	32.5
3/4	19	1.024	26	2.283	58	1.654	42	1/2	13	950	432	80.74	36.7

Zinc Plated Beam Clamps

A (Rod Size)		B		C		D		E		Max Rec Load		Weight per 100	
in	mm	in	mm	in	mm	in	mm	in	mm	lbs	kg	lbs	kg
1/4	6	.827	21	1.614	41	1.496	38	1/4	6	350	159	31.46	14.3
3/8	10	.906	23	1.732	44	1.520	39	3/8	10	500	227	34.10	15.5
1/2	13	.906	23	1.890	48	1.575	40	3/8	10	950	432	52.36	23.8

Recommended Torque for Set Screw

Set Screw Size	1/4 - 20	3/8 - 16	1/2 - 13	5/8 - 11	3/4 - 10
In • Lb	40	60	125	250	400
Nm	5	7	14	28	45