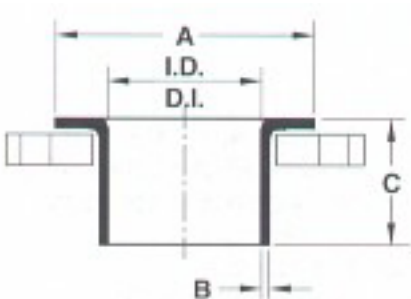


INSIDE DIA.		A		B		T=.125		T=.078		WEIGHT / POIDS	
DIA. INTERIEUR						C		C			
INCHES POUCES	mm	INCHES POUCES	mm	INCHES POUCES	mm	INCHES POUCES	mm	INCHES POUCES	mm	LB	kg
1½	38	3	76	0.125	3.18	1 13/16	46	1 23/32	44	0.2	0.10
2	51	3 ½	89	0.125	3.18	2 5/16	59	2 7/32	56	0.3	0.14
2½	64	4 ½	114	0.125	3.18	2 13/16	72	2 23/32	69	0.4	0.20
3	76	5 1/8	130	0.125	3.18	3 5/16	84	3 7/32	82	0.6	0.27
4	102	6 ½	165	0.125	3.18	4 5/16	110	4 7/32	107	0.9	0.41
5	127	7 ½	190	0.125	3.18					1.0	0.45
6	152	8 ½	216	0.125	3.18					1.3	0.58
8	203	10 5/8	270	0.125	3.18					1.8	0.82
10	254	13	330	0.125	3.18					2.4	1.10
12	305	15	381	0.125	3.18					3.5	1.60
14	356	17½	445	0.125	3.18					4	1.80
16	406	19¾	502	0.125	3.18					5	2.27

NOTES

- Material: Stainless steel 304L - 316L - 317L.
Other alloys available upon request.
- For maximum working pressure see technical section.

- Matériau: acier inoxydable 304L - 316L - 317L.
Autres alliages disponibles sur demande.
- Pour pression maximale voir section technique.



I.D.	IN / PO	3	4	6	8	10	12
D.I.	mm	76	102	152	203	254	305
Dia. A	IN / PO	5	6 ½	8 ½	10 5/8	12 ¾	15
	mm	127	157	216	270	324	381
Dia. C	IN / PO	2 ½	3	3 ½	4	5	6
	mm	64	76	89	102	127	152
B	.125" (3.18 mm) ALL SIZES / TOUTES LES GRANDEURS						

Note: Stocked in 316L

Note: Disponible en magasin en 316L seulement.