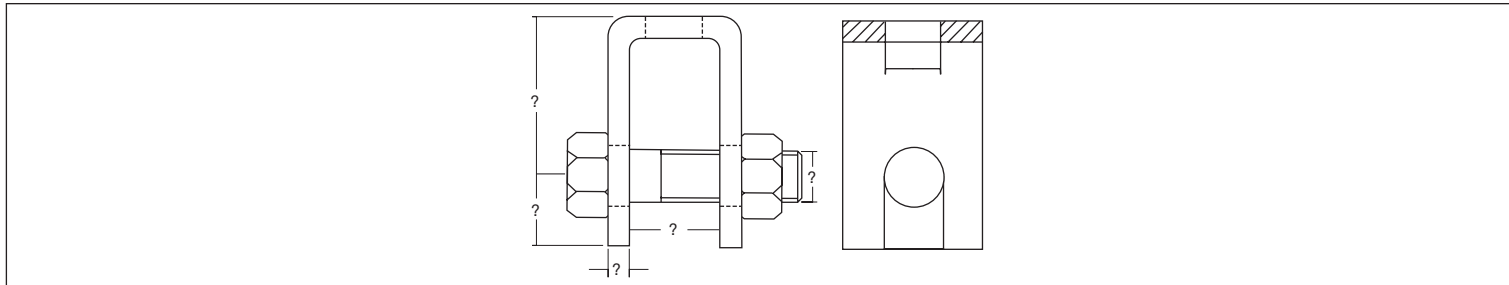


## CARBON STEEL HEAVY DUTY BEAM ATTACHMENT



SIZE		A		B		C		D		E	
in	mm	in	mm	in	mm	in	mm	in	mm	in	mm
3/8	10	2-1/8	54	7/8	22	1-5/8	41	1/4x2	6x50	1/2x3	13x76
1/2	13	2-1/8	54	7/8	22	1-5/8	41	1/4x2	6x50	1/2x3	16x76
5/8	16	2-1/8	54	7/8	22	1-11/16	43	1/4x2	6x50	3/4x3	19x76
3/4	19	2-3/8	60	1-1/8	28	1-11/16	43	3/8x2-1/2	10x64	7/8x3-1/2	22x89
7/8	22	3-1/8	79	1-1/4	32	2	51	3/8x2-1/2	10x64	1x4	25x102
1	25	3-1/4	83	1-1/2	38	2	51	1/2x3	12x76	1-1/8x6	28x152
1-1/8	29	3-1/2	89	1-1/2	38	2-3/8	60	1/2x3	12x76	1-1/4x6	32x152
1-1/4	32	3-1/2	89	2	50	2-1/2	64	5/8x4	16x102	1-1/2x7	38x178
1-1/2	38	4	102	2-1/2	64	3	76	3/4x4	18x102	1-3/4x8	44x203
1-3/4	44	5	127	2-3/4	70	3-3/4	95	3/4x5	18x127	2x10	50x254
2	50	5	127	3-1/4	83	3-3/4	95	3/4x6	18x152	2-1/4x10	57x254
2-1/4	57	6	152	3-1/2	89	4-1/4	108	3/4x6	18x152	2-1/2x11-1/2	64x292
2-1/2	64	6	152	3-3/4	95	4-1/2	114	3/4x6	18x152	2-3/4x13	70x330